

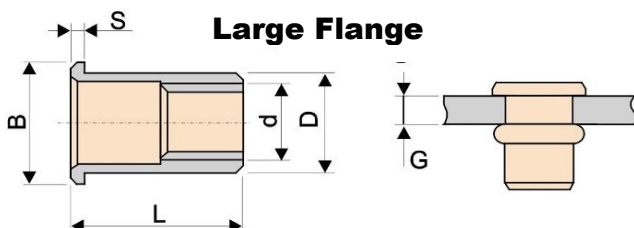


SPECIAL RIVETS CORP.

恒昭企業股份有限公司

No. 699 Fuke Road, Situn District, Taichung City 40764, Taiwan
TEL: 886-4-24623555 FAX: 886-4-24621777
E-mail: srcrivet@ms12.hinet.net http://www.src.com.tw

Steel Blind Nuts



Non-Ribbed



Ribbed

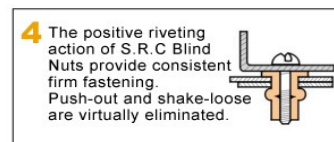
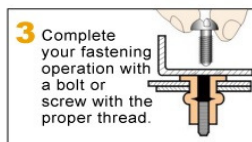
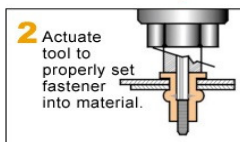
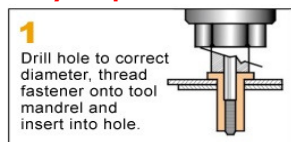
Flat Head Large Flange Type

Flat Head Blind Nuts provide the most bearing surface for higher torque applications. The larger flange extends above the material in which it is installed and provides a built-in spacer. Choose flat head when high pushout values are required.

NUT CODE	THREAD SIZE d (mm)	NUT DIAMETER D (mm)	HOLE SIZE (-0/+0.1mm)	NUT LENGTH L (mm)	GRIP RANGE G (mm)	HEAD DIAMETER B (mm)	HEAD THICKNESS S (mm)
M4LF	M4 x 0.7	5.9	6	11.6	0.3-2.5	9	0.8
M5LF	M5 x 0.8	6.9	7	13	0.5-3.0	10	1.0
M6LF	M6 x 1.0	8.9	9	16	0.5-4.0	13	1.5
M8LF	M8 x 1.25	10.9	11	18	0.8-4.0	15	1.5
M10LF	M10 x 1.5	12.9	13	21	1.0-5.0	19	1.7

- Perfect for use in metal, fiberglass and rigid plastic previously too thin for tapped threads
- Provide a neat appearance after installation
- Once in place, the internal threads are ready for a screw or bolt

Easy Steps for Installation



Due to continuous development we reserve the right to alter specifications without prior notice.

Factory:

SRC METAL (SHANGHAI) CO., LTD.

SRC METAL (JIASHAN) CO., LTD.

<http://www.srcrivet.com>